

EXPEDITION

Grey Whale





WHERE

Bahia Magdalena is located in Baja California Sur, we will arrive to San Carlos, a fishing village 3:30 hours by car from la Paz.

San Carlos is a small fishing community on the west coast of the Baja California Sur Peninsula. Here we find a natural refuge for pelagic animals. Every year, during the months of December to March, it is a haven for one of the world's largest migrations of gray whales. The curiosity of these animals allows us to interact directly with the whales and their calves!

MAR DE CORTÉS

SAN CARLOS
BAJA
CALIFORNIA SUR



LA PAZ

OCEANO PACÍFICO



WHAT TO EXPECT?

The Grey Whale sighting expedition is a 5 day trip that includes:

- **3 full days of safari expedition**

Chances are that you can interact with grey whales and calves.

- **4 nights hotel accomodation**

In a local hotel in San Carlos. Each room has double occupancy, AC, wifi and hot water:

- **Food and non-alcoholic beverages;**

Breakfast, lunch, dinner and snack.

- **Ground Transportation**

● **Gray Whale watching activity** aboard a boat and a tour of the mangroves and dunes of the bay.

Not Included:

- × Airplane Tickets.
- × Accomodation in La Paz or Los Cabos.
- × It is recommended to arrive to La Paz a day before or the same day of the start of the trip by 1:00pm. That day we will be leaving La Paz at 3:00pm to San Carlos.
- × Alcoholic beverages are strictly prohibited during the time on the boat. Once in San Carlos, after the activity is over you can purchase and consume alcohol.

What to Pack:



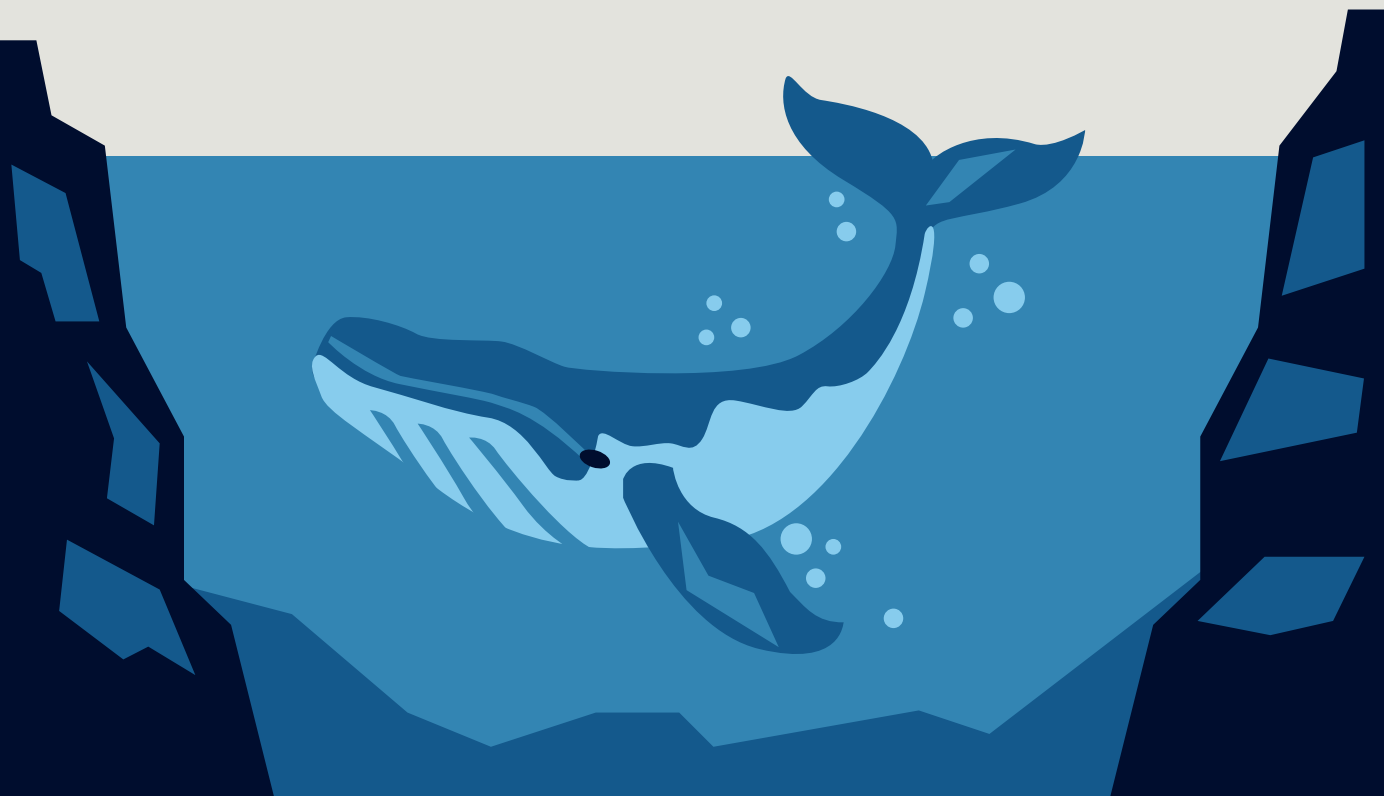
- 1 Towel (optional).
- 2 Cap or Hat.
- 3 Bug Spray.
- 4 SPF.
- 5 Seasick medication.
- 6 Dry Bag.
- 7 Photographic gear.
- 8 Windbreaker, sweater, hoodie and/or jacket.
- 9 Long Sleeve Shirt (against sun/cold).
- 10 Raincoat.



A TYPICAL DAY OF WHALE WATCHING

- Departure at 8:30am after having breakfast at a local restaurant.
- Depending on the conditions of the day, we will be looking for Grey Whales and calves.
- We will focus on sailing within the bay of San Carlos, looking for the Grey Whales.

- Lunch aboard. (Please let us know of any food restriction.).
- Look for more pelagic encounters or visit amazing sand dunes and mangroves.
- Back at San Carlos at 6:45pm to relax.
- Dinner at 8:00pm.



INFORMATION

Price

\$1,600 USD

Per person

6 people

Group Size

*does not include tax

Safety

Our professional guide will give a security briefing on the day of arrival at San Carlos. At all times you will be accompanied by a Professional guide, who will ensure that you have an incredible experience!

This activity is suitable for all ages.

Requirements

- ① Signed liability waiver.
- ② Tolerance to the sea (sun, waves, wind).

How to get there?

The closest airport is La Paz, located at 3:30 hours by car from San Carlos. (transportation included). If you plan to get to Los Cabos, you should consider 3 more hours of ground transportation (cost not included).

Release of obligations

We do not insure pelagic encounters of any kind. We will do our best to see all types of marine animals, however there is the possibility of not having any encounters, after all, we are talking about the big blue.

Meteorology

If the meteorological reports of the weather conditions do not allow a safe expedition (winds of 20-30 knots with waves of 2-3 meters) we will be in dire need of **canceled** the expedition. This decision will be made 1 week before the trip. In case of cancellation, a change of date or a **full refund** of your deposit will be made. In case the **cancellation** occurs in San Carlos, please consult our policies.

Cancellation policy

- **The reservation will be considered confirmed** once the deposit of 50% of the total quoted is received, in addition to sending your completed registration form. No trip is considered booked or confirmed without these requirements.

- In case of **cancellation** by the traveler, the deposit **will not be refunded**.

- If the trip gets **canceled in San Carlos** because of the weather. We will do our best to find an activity to do in a near place in Baja California that **is not affected** by weather conditions.

- **The deposit may remain as a guarantee** for the next 6 months after the cancellation of the trip, however it will not be refunded nor can it be transmitted to third parties.

- **In the extraordinary event that the company cancels the trip**, the total deposit will be refunded to the traveler.

Deposit

FOR MEXICAN BANKS
NAME:

Carlota Creel Ramos Cardenas

ACCOUNT:

04 75 69 94 95

CLABE:

012180004756994950

FOR INTERNATIONAL:

PAYPAL: ASK FOR THE LINK

STRIPE: ASK FOR THE LINK

BANCOMER

CONTACT

5% is donated to a non profit Mexican Civil Association, which is in charge of protecting the Mexican seas and the area where the activity takes place.

WEB:

sqexpeditions.mx

CEL:

+ (52) 55 3479 1915

MAIL:

hello@sqexpeditions.com





SERENDIPITY
QUEST